



Pattra House and Property PCL and associated companies

Pattra House and Property PCL is real estate developer in residential type that has been establish for over 30 years. We have developed the residential project under different brands and covered all classes of customer. Since 2524 BE., we developed project in Bangkok Metropolitan Region as the main area of company. In 2555 BE., we expand into Southern and Eastern area to increase the customer base. The operation of company is focused on develop the project which meet the lifestyle of targeted customer's group in different zones. Furthermore, we also dedicated to give out the product that is on the same level as that of the top-notch brand in the residential market to the our customers.

Apart from being a real estate developer, the company itself also specialize in construction and develop the building system to shorten project developing period. The company has used the precast system in construction since 2545 BE.

Brands under the administration of company



Projects that are currently being developed

1. The Wish 3 @ Paklok



- Project type : Townhouse
with single-story, 2 bedrooms, 1 bathroom with 80 sq.m of area and the utilities space of 54 sq.m.
Semi-detached house
with single-stories, 2 bedrooms, 1 bathroom with 140 sq.m of area and 96 sq.m. utilities space.
- Total unit : 161 units
- Project value : 320 million baht
- Location : Paklok sub-district, Thalang district, Phuket province
- Selling date : January, 2561 BE.

2. The Wish 2 @ Paklok



- Project type : Semi-detached house,
with single-story, 2 bedrooms, 1
bathroom, 140 sq.m. area with
utilities space of 96 sq.m.
Detached house,
with single-story with 3 bedrooms
and 2 bathroom, 200 sq.m. area with
120 sq.m. utilities space.
- Total units : 107 units
- Project value : 300 million baht
- Location : Paklok sub-district, Thalang district,
Phuket province
- Selling date : April, 2559 BE.

3. Motive Cheangwatana



- Project type : 2 Condominiums
with 28-32 sq.m. rooms.
- Total unit : 130 units
- Project value : 250 million baht
- Location : Laksi sub district, Donmuang
district, Bangkok
- Selling date : February, 2559 BE.

4. Motown Brio



- Project type : Townhome
with 4 stories, 4 bedrooms and 6
bathrooms in the area of 88 sq.m.
and 270 sq.m. of utilities space.
- Total unit : 6 units
- Project value : 50 million baht
- Location : Bangpood sub-district, Pakkret
district, Nonthaburi province.
- Selling date : June, 2559 BE.

5. Motown Lite Chajyapruek



- Project type : Townhome
with 2 stories, 4 bedrooms, 3
bathrooms with the area of 80 sq.m.
and 110 sq.m. of utilities space.
- Total unit : 110 units
- Project value : 270 million bath
- Location : Lahan sub-district, Bangbuathong
district, Nonthaburi province.
- Selling date : July, 2560 BE.

6. Pattra Grand Town 2



- Project type : Townhouse
with single-story, 2 bedrooms, 1
bathroom with 76.8 sq.m of area and
the utilities space of 66 sq.m.
Semi-detached house
with single-stories, 2 bedrooms, 1
bathroom with 140 sq.m of area and
96 sq.m. utilities space.
- Total unit : 350 units
- Project value : 600 million bath
- Location : Bung sub-district, Sriracha district,
Chonburi province
- Selling date : August, 2560 BE.

Portfolio of the company

The progression of the company from 2524 BE.- until the present as separate by the zone of development

Bangkok Metropolitan region

In Bangkok Metropolitan region, the company has develop projects in flatland and highland format which consist of detached house, semi-detached house, townhouse, shop house, condominium, and office building up to 40 projects as total value of 15,000 million baht.



Southern region

In southern part, the company develop projects in Phuket province area in flatland format which consist of detached house, semi-detached house and shop house up to 3 projects as total value of 1,000 million baht.



Eastern region

In eastern part, the company develop projects in Chonburi province area in flatland format which consist of detach house, semi-detached house, townhouse, and shop house up to 3 projects as total value of 1,330 million baht.



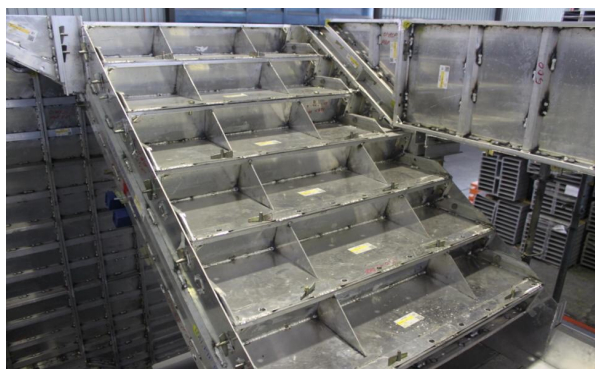
Portfolio in construction of structure system

Precast system – the company has developed a precast system which shorten the time of construction with better quality.

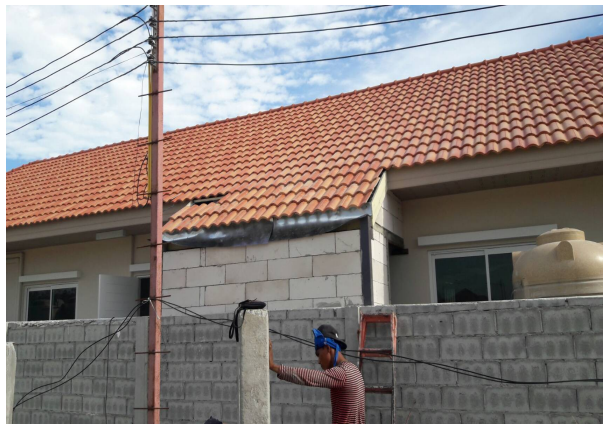




Aluminum frame construction system – the company recently used the aluminum frame to cast bearing walls on the construction site to build condominiums which allow us to reduce 30% of construction time.







**The list of projects that developed by
Pattara House and Property PCL
and associated companies**

Bangkok Metropolitan region

Detached house, Semi-detached house, Townhouse, and shop house

Vinsiri Townhouse 1

Vinsiri Townhouse 2

Pattraniwate 1 Prachachuen

Pattraniwate 2 Prachachuen

Pattraniwate 3 Prachachuen

Pattraniwate 4 Teparuk

Pattraniwate 5 Bangsue

Pattraniwate 6 (Golden national park) Changwattana

Pattraniwate 7 Bangsue

Pattraniwate 8 Sukhumvit 101

Pattraniwate 9 (Pingumporn)

Pattraniwate 10 (Sriamporn)

Pattraniwate 11 (Golden national park)

Pattraniwate 12 (Pattniwate Lagoon)

Pattraniwate 13 (Chatpairin)

Pattraniwate 14 (Bangkuwatt)

Pattrawan

Patrapark
Pattra private 1
Pattra private 2
Pattra private 2 shop house
Pattra private 3
Pattra private 3 phrase 2
Pattrarom 1
Pattrarom 2 phrase 1
Pattrarom 3
Pattrarom 2 phrase 2
Pattra commercial Bang bua thong
Home office Patrapark
Pattra Mo-Town
Motown Brio
Pattra Private @ Monument

Condominiums and Office building collections

Satorn Place
Pattara SriPat
Hansa Condovile
Motive Cheangwattana
Pijit Plaza Hotel
Sin Satorn Tower

Chonburi and Phuket

Detached house, Semi-detached house, Townhouse, and Shop house

The Wish @ Monument

The Wish 2 @ Paklok

The Wish 3 @ Paklok

The Wish @ Khaolam

Pattra Grand Town 1

Pattra Grand Town 2